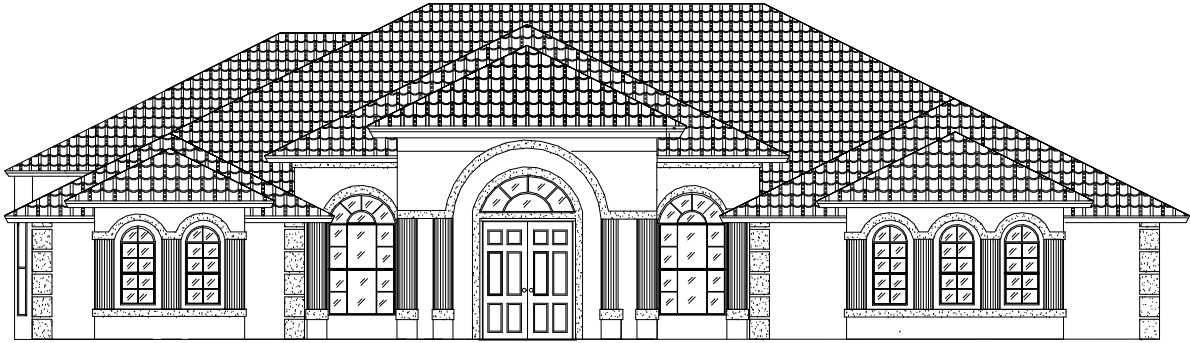
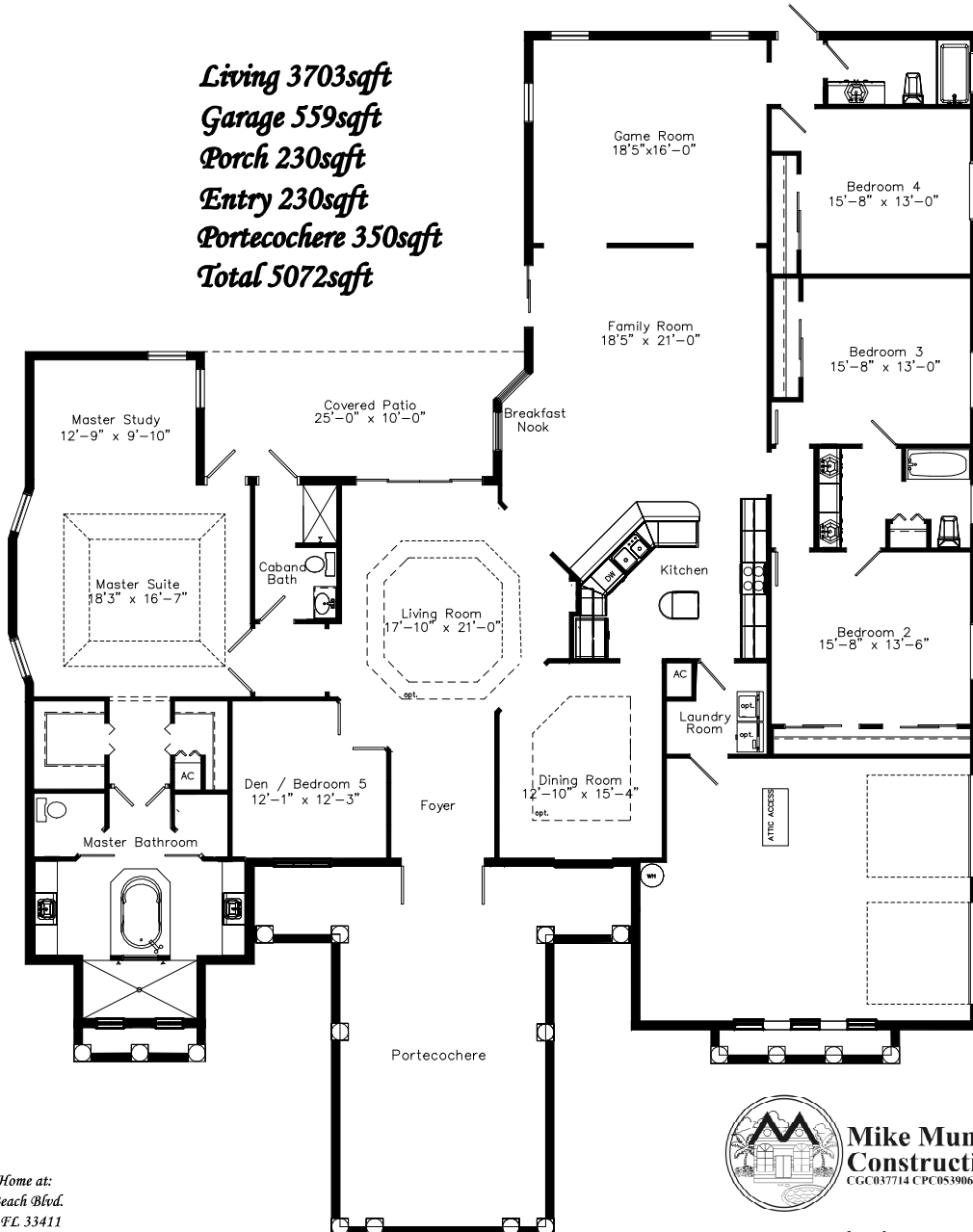


# Estate Series

## Palm Beach Portecochere



**Living 3703sqft**  
**Garage 559sqft**  
**Porch 230sqft**  
**Entry 230sqft**  
**Portecochere 350sqft**  
**Total 5072sqft**



**Mike Munz  
 Construction, Inc.**  
 CGC037714 CPC053906 CCC056805

Visit our Model Home at:  
 5061 Royal Palm Beach Blvd.  
 West Palm Beach, FL 33411  
 (561) 790-3662 Fax (561) 790-5698  
 National Sales 1-888-Mike Munz  
 www.mikemunz.com

Copyright Mike Munz Construction, Inc.  
 This brochure is for illustrative purposes only and not part of a legal contract.  
 Floor plans, dimensions, specifications and price are subject to change  
 without notice. Room sizes are approximate.